

# **BUDGET**

## **FOR FISCAL YEAR**

### **2014-2015**

SERVING HIDALGO COUNTY AND STARR COUNTY, TEXAS

# **South Texas College Budget**

**Fiscal Year 2014-2015**



**Hidalgo County and Starr County, Texas**

**South Texas College  
Budget  
For The Fiscal Year Ending August 31, 2015**

**TABLE OF CONTENTS**

**INTRODUCTORY SECTION**

Board of Trustees and President .....	1-3
Comprehensive Mission: Vision, Purpose, Core Values, Guiding Principles & Strategic Directions .....	4
Fact Sheet 2014-2015 .....	5
Programs of Study 2014-2015 .....	6
Summary of Fall Semester Headcount, Unduplicated Annual Headcount and Annual Full Time Equivalent (FTE) .....	7
Summary of Revenues and Transfers and Expenditures, Transfers and Contingencies by Fund - Current and Plant Funds .....	8

**UNRESTRICTED FUND REVENUES**

Revenues by Source - Pie Chart.....	10
Revenues by Source - Comparison of Previous Fiscal Year with Fiscal Year Ending August 31, 2015 - Pie Chart .....	11
Summary of Revenues - Budget and Actual - Comparison of Previous Fiscal Years with Fiscal Year Ending August 31, 2015 .....	12

**UNRESTRICTED FUND EXPENDITURES**

Expenditures by Function (Without Transfers and Contingencies) - Pie Chart.....	14
Expenditures by Function - Comparison of Previous Fiscal Year with Fiscal Year Ending August 31, 2015 - Pie Chart .....	15
Expenditures by Classification - Pie Chart .....	16
Expenditures by Classification - Comparison of Previous Fiscal Year with Fiscal Year Ending August 31, 2015 - Pie Chart .....	17
Summary of Expenditures by Function and Classification .....	18-19

**UNRESTRICTED FUND CAPITAL EXPENDITURES**

Summary of Capital Expenditures by Function and Organization .....	21
--	----

**AUXILIARY FUND**

Summary of Revenues, Expenditures and Transfers - Budget and Actual - Comparison of Previous Fiscal Years with Fiscal Year Ending August 31, 2015 .....	23
--	----

**South Texas College**  
**Budget**  
**For The Fiscal Year Ending August 31, 2015**

**TABLE OF CONTENTS** *(Continued)*

**RESTRICTED FUND**

Summary of Revenues, Expenditures and Transfers - Budget and Actual - Comparison of Previous  
Fiscal Years with Fiscal Year Ending August 31, 2015 ..... 25

**PLANT FUNDS**

Summary of Revenues, Expenditures and Transfers ..... 27

**RESOLUTION**

Resolution Adopting the Budget of South Texas College for the Fiscal Year 2014-2015 .....29-30

# **Introductory Section**

**South Texas College**  
**Budget**  
**For the Fiscal Year Ending August 31, 2015**

**Board of Trustees and President**

---

**ROY DE LEÓN**  
**CHAIR**



Branch Retail Executive of BBVA Compass Bank – Mercedes District 7  
Representing Northeast Hidalgo County, North Weslaco, Edcouch-Elsa, La Villa, North Mercedes, Northeast Alamo, Northeast Edinburg, and Hargill  
(Appointed 1997 - 1998)  
First Term: May 1998 – May 2002  
Second Term: May 2002 – May 2008  
Third Term: May 2008 – May 2014  
Fourth Term: May 2014 – May 2020  
Serves as Chair of the Board, member of the Finance & Human Resources Committee, and member of the Facilities Committee.  
Formerly served as Chair, Vice Chair and Secretary of the Board, Chair and member of the Finance & Human Resources Committee, and member of the Facilities Committee.

**DR. ALEJO SALINAS, JR.**  
**VICE CHAIR**



Clinical Lecturer, University of Texas-Pan American  
Retired Superintendent/Superintendent Emeritus, Hidalgo ISD District 5  
Representing Northwest Hidalgo County, Edinburg, North San Juan, and Northeast Pharr  
First Term: May 1996 – May 2002  
Second Term: May 2002 – May 2008  
Third Term: May 2008 – May 2014  
Fourth Term: May 2014 – May 2020  
Serves as Vice Chair of the Board, Chair of the Finance & Human Resources Committee, member of the Education and Workforce Innovation Committee, and member of the Facilities Committee.  
Formerly served as Chair and member of the Facilities Committee, Chair and member of the Education and Workforce Development Committee, and member Finance & Human Resources Committee.

**PAUL R. RODRIGUEZ**  
**SECRETARY**



CEO of Valley Land Title Co.  
District 3  
Representing South McAllen, Southwest Pharr, Hidalgo, Sharyland, Southeast Mission, and Granjeno  
First Term: August 2012 – May 2016  
Serves as Secretary of the Board, member of the Finance & Human Resources Committee, and member of the Facilities Committee.  
Formerly served as member of the Finance & Human Resources Committee.

**South Texas College**  
**Budget**  
**For the Fiscal Year Ending August 31, 2015**

**Board of Trustees and President**

---

**ROSE BENAVIDEZ**  
MEMBER



President of Starr County Industrial Foundation  
District 1  
Representing Starr County  
First Term: Nov. 2009 – May 2012  
Second Term: May 2012 – May 2018  
Serves as member of the Finance & Human Resources Committee and member of the Facilities Committee.  
Formerly served as Chair and Vice Chair of the Board, member of the Facilities Committee, and member of the Finance & Human Resources Committee.

**GRACIELA FARIAS**  
MEMBER



Self-Employed Educational Consultant  
Retired from McAllen Independent School District  
District 2  
Representing La Joya, Western Mission, Palmview, Sullivan City, Penitas, and Western Alton  
First Term: May 2012 – May 2018  
Serves as Chair of the Education and Workforce Development Committee and member of the Facilities Committee.  
Formerly served as Secretary of the Board and member of the Education and Workforce Development Committee.

**GARY GURWITZ**  
MEMBER



Managing Partner, Atlas, Hall & Rodriguez, L.L.P., McAllen  
District 4  
Representing North McAllen, Northwest Pharr, Palmhurst, Northeast Mission, and Southwest Edinburg  
(Appointed 1993 - 1998)  
First Term: May 1998 – May 2004  
Second Term: May 2004 – May 2010  
Third Term: May 2010 – May 2016  
Serves as Chair of the Facilities Committee and member of the Education and Workforce Innovation Committee.  
Formerly served as Chair, Vice Chair, and Secretary of the Board, Chair and member of the Facilities Committee, member of the Finance & Human Resources Committee, and member of the Education and Workforce Development Committee.

**South Texas College  
Budget  
For the Fiscal Year Ending August 31, 2015**

**Board of Trustees and President**

---

**JESSE VILLARREAL  
MEMBER**



Parental Involvement Specialist, Weslaco ISD  
District 6  
Representing Donna, South Alamo, South San Juan, Southeast Pharr, South  
Weslaco, and Progreso  
First Term: May 2000 – May 2006  
Second Term: May 2006 – May 2012  
Third Term: May 2012 – May 2018  
Serves as member of the Facilities Committee.  
Formerly served as Vice Chair and Secretary of the Board and member of the  
Facilities Committee.

**DR. SHIRLEY A. REED  
PRESIDENT**



Founding College President: June 1994 - Present



# THE VISION, PURPOSE, CORE VALUES, GUIDING PRINCIPLES, AND STRATEGIC DIRECTIONS CONSTITUTE THE COMPREHENSIVE MISSION for SOUTH TEXAS COLLEGE



## VISION STATEMENT

South Texas College is a world-class institution advancing regional prosperity through education for a better quality of life in our community.

## PURPOSE STATEMENT

South Texas College is an innovative, public, post-secondary institution providing quality education and career pathways for the people and communities of Hidalgo and Starr counties. The College achieves student success, nurtures talent development, and promotes economic vitality through collaborative and creative approaches to teaching, learning, and support services.

## CORE VALUES

1. Student Success: We promote student success and completion through the implementation of diverse strategies and initiatives.
2. Opportunity: We value providing access and opportunities to students to meet the needs of our communities.
3. Excellence: We value excellence in teaching, learning, and all support services.
4. Innovation: We encourage creativity and champion innovative approaches to teaching, learning, and services.
5. Community: We value engaging the community in students' learning experiences and in the positive transformation of our region.
6. Professionalism: We demonstrate professionalism through collegiality, respect, and recognition for each other.
7. Collaboration: We value collaboration and communication among STC employees and STC constituents.
8. Integrity: We value integrity through honest and transparent communication and courageous dialogue.

## GUIDING PRINCIPLES

1. South Texas College shares collective responsibility for student learning, student success, and regional prosperity.
2. Students succeed through mutual engagement with the College at each stage of their educational pathways.
3. South Texas College champions innovation through its willingness to transform the College's systems to meet the educational and workforce needs and challenges of our region.
4. Collaboration with educational and business partners is key to student, college, and community successes.

## STRATEGIC DIRECTIONS

*(\*The development of Strategic Directions incorporated the framework recommended by the American Association of Community Colleges (AACC)'s report Reclaiming the American Dream. The changes recommended by this framework include changing from Fragmented Course-Taking to Clear Pathways, from Low Success Rate to High Success Rate, from Access to Access and Success, from a Culture of Isolation to Collaboration, and from Individual Faculty Prerogative to Collective Responsibility.)*

### Clear Pathways

South Texas College provides students with clear pathways to facilitate coherent educational experiences and timely completion of a post-secondary credential leading to relevant employment and/or further educational experiences.

### Access and Success

South Texas College is committed to increasing the college-going and college-completing rates in the region.

### High Success Rate

South Texas College engages in effective, proven efforts to ensure student success and positively affect the economic and social mobility of residents in our region.

### Collective Responsibility

South Texas College empowers faculty to work together within and across disciplines to design best learning experiences for students, leading to their academic success, career readiness, and timely completion.

### Collaboration

South Texas College commits to effective interdepartmental and interdivisional collaborations and advances mutually beneficial community and educational partnerships that create a collective impact on student success.

### Cost Efficiency

South Texas College seeks innovative redesign of college processes to promote new approaches to cost-consciousness and cost-efficiency.



# SOUTH TEXAS COLLEGE FACT SHEET

## ABOUT SOUTH TEXAS COLLEGE

Founded in 1993, South Texas College is accredited by the Commission on Colleges of the Southern Association of Colleges and Schools to award baccalaureate and associate degrees. More than 31,000 students attend STC, and a faculty and staff of more than 1,600 serve STC's five state-of-the-art campuses, three teaching centers and one virtual campus.

## CREATION

South Texas College was created on September 1, 1993, by Texas Senate Bill 251 to serve Hidalgo and Starr counties. A confirmation election, held on August 12, 1995, established a taxing district for the college. Seven districts, based on population, were also approved for single-member representation on the Board of Trustees. A community leader from each of the seven districts was originally appointed by Governor Ann Richards to serve on the founding Board of Trustees. Since then, elections have been held for all of the seats, and all members have been elected as of May 2002.

South Texas College is accredited by the Commission on Colleges of the Southern Association of Colleges and Schools to award the Baccalaureate and Associate degrees. Contact the Commission on Colleges at 1866 Southern Lane, Decatur, Georgia 30033-4097 or call 404-679-4500 for questions about the accreditation of South Texas College.

South Texas College's offerings are approved by the Texas Higher Education Coordinating Board and the Texas Education Agency.

## DUAL ENROLLMENT

STC has instituted a variety of dual enrollment programs, including early college high schools, drop-out recovery programs and other unique initiatives with high schools throughout Hidalgo and Starr counties. The programs allow eligible students to take college courses while attending high school. Combined, more than 10,000 students are currently enrolled in these programs. Since 2003, the college has provided tuition-free dual enrollment to over 81,000 students in 68 school sites, saving families over \$85 million in tuition.

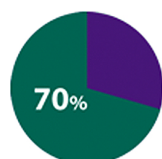
## CONTINUING, PROFESSIONAL AND WORKFORCE EDUCATION

The program provides opportunities for lifelong learners who want to upgrade their skills, change careers, renew licenses and certifications, or seek personal enrichment. There is a wide variety of course offerings including online classes. Additionally the division also offers customized training to area businesses, industries and the community. Training programs are tailored to a client's specific needs in terms of content, schedule and location.

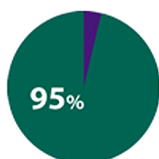
## ARTICULATION AGREEMENTS

For those students who wish to continue their education beyond an associate's degree, STC has more than 60 articulation agreements in place with colleges across the country.

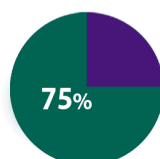
## VITAL STATISTICS



More than 70% of student population are the first in their families to attend college



More than 95% of students are Hispanic



More than 75% (excluding dual enrollment students) take advantage of some form of financial aid



## LOCATIONS

Pecan Campus  
McAllen, TX

Mid-Valley Campus  
Weslaco, TX

Starr County Campus  
Rio Grande City, TX

Technology Campus  
McAllen, TX

Dr. Ramiro R. Casso  
Nursing & Allied Health  
Campus  
McAllen, TX

## PRESIDENT

Dr. Shirley A. Reed  
*President*

## BOARD OF TRUSTEES

Roy de León  
*Chair*

Alejo Salinas, Jr.  
*Vice Chair*

Paul R. Rodriguez  
*Secretary*

Rose Benavidez  
*Member*

Graciela Farias  
*Member*

Gary Gurwitz  
*Member*

Jesse Villarreal  
*Member*

For the 2014-2015 academic year STC has 114 degrees and certificates available to its students: 4 Baccalaureate degrees, 1 Associate of Arts Degree in 18 fields of study, 1 Associate of Arts in Teaching in 3 fields of study, one Associate of Science Degree in 8 fields of study, 29 Associate of Applied Science Degrees, and 52 Certificates.

## BUSINESS & TECHNOLOGY

### ASSOCIATE OF ARTS DEGREE

#### Field of Study

- Business Administration-Transfer Plan

### ASSOCIATE OF APPLIED SCIENCE DEGREES

- Automotive Technology
  - Specialization:
    - GM-ASEP
- Business Administration
  - Specializations:
    - Accounting
    - Banking
    - Import/Export/Logistics
    - Management
    - Marketing
- Computer Aided Drafting and Design Technology
  - Specializations:
    - Architectural Drafting
    - Civil Drafting
    - Design and Technical Graphics
- Construction Supervision
- Culinary Arts
- Diesel Technology
- Electrician Technology
- Electronic and Computer Maintenance Technology
  - Specializations:
    - Computer Maintenance Technology
    - Computer Support Specialist
- Fire Science Technology
- Heating, Ventilation, Air Conditioning and Refrigeration Technology
- Human Resource Specialist
- Information Technology
  - Specializations:
    - Computer Specialist
    - Information Security/Digital Forensics Specialist
- Law Enforcement
- Legal Office Management
- Office Management
- Paralegal
- Precision Manufacturing Technology

### CERTIFICATES

- Accounting Clerk
- Architectural Drafting
- Automotive Technology
- Banking
- Basic Firefighter
- Basic Peace Officer
- Civil Drafting
- Combination Welding
- Commercial Baking
- Commercial Cooking
- Computer and Information Technologies Specialist
- Computer and Internet Specialist

- Computer and Network Specialist
- Computer Applications Specialist
- Computer Maintenance Specialist
- Computer Support Specialist
- Construction Supervision Assistant
- Design and Technical Graphics
- Diesel Technology
- Electrician Assistant
- Employee and Labor Relations Assistant\*\*
- Ford Youth and Adult Training Program
- Heating, Ventilation, Air Conditioning and Refrigeration Technology
- Human Resource Assistant
- Import/Export
- Information Security/Digital Forensics Specialist
- Legal Office Specialist
- Logistics
- Management
- Marketing
- Mechatronics
- Multimedia Specialist
- Office Specialist
- Payroll Assistant\*\*
- Precision Manufacturing Technology
- Recruiter Assistant\*\*
- Structural Welding
- Telecommunication Technology Specialist

## LIBERAL ARTS

### ASSOCIATE OF ARTS DEGREE

#### Fields of Study

- Communication
- Drama
- English
- Fine Arts
- Graphic Arts
- History
- Interdisciplinary Studies
- Language and Cultural Studies
- Mexican-American Studies
- Philosophy

## MATH, SCIENCE & BACHELOR PROGRAMS

### ASSOCIATE OF SCIENCE DEGREE

#### Fields of Study

- Biology
- Chemistry
- Computer Information Systems
- Computer Science
- Engineering
- Mathematics
- Physics
- Pre-Pharmacy

## BACCALAUREATE DEGREES

#### Bachelor of Applied Science in:

- Organizational Leadership

#### Bachelor of Applied Technology in:

- Computer and Information Technologies
- Medical and Health Services Management
- Technology Management

## NURSING & ALLIED HEALTH

### ASSOCIATE OF APPLIED SCIENCE DEGREES

- Associate Degree Nursing
  - LVN/ADN Transition
  - Paramedic to RN
- Emergency Medical Technology-Paramedic
- Health Information Technology
- Medical Assistant Technology
- Occupational Therapy Assistant
- Pharmacy Technology
- Physical Therapist Assistant
- Radiologic Technology
- Respiratory Therapy

### CERTIFICATES

- Electronic Health Record Specialist
- Emergency Medical Technology-Basic
- Emergency Medical Technology-Intermediate
- Emergency Medical Technology-Paramedic\*
- Medical Assistant Technology
- Medical Coding Specialist
- Medical Information/Transcription Specialist
- Medical Office Specialist
- Patient Care Assistant
- Pharmacy Technology
- Vocational Nursing

## SOCIAL SCIENCES

### ASSOCIATE OF ARTS DEGREE

#### Fields of Study

- Anthropology
- Criminal Justice
- Kinesiology
- Political Science
- Psychology
- Social Work
- Sociology

### ASSOCIATE OF ARTS IN TEACHING

#### Fields of Study

- EC-6 Generalist
- 4-8 Generalist
- Grades 8-12

### ASSOCIATE OF APPLIED SCIENCE DEGREES

#### Fields of Study

- American Sign Language and Interpreter Studies
  - Specializations:
    - Deaf Support Specialist
    - Sign Language Interpreter
- Child Development
- Public Administration

### CERTIFICATES

- Administration of Early Childhood Programs
- Child Development
  - Specializations:
    - Infant and Toddler
    - Pre-School
- Trilingual Interpreter (Enhanced Skills Certificate)

\*This is a two-year certificate.  
\*\*Pending approval.

# South Texas College

## Summary of Fall Semester Headcount, Unduplicated Annual Headcount and Annual Full Time Equivalent (FTE)

Academic Year	Fall Semester Headcount	Unduplicated Annual Headcount	Annual FTE
1993 - 94	1,055	2,719	1,318
1994 - 95	2,227	4,720	2,221
1995 - 96	3,254	6,893	3,087
1996 - 97	5,416	9,756	4,696
1997 - 98	6,849	11,861	5,737
1998 - 99	9,598	14,391	7,572
1999 - 00	10,364	15,214	7,901
2000 - 01	11,183	16,793	8,343
2001 - 02	12,443	18,357	9,275
2002 - 03	13,691	20,447	10,173
2003 - 04	15,228	21,927	10,529
2004 - 05	17,035	23,847	11,384
2005 - 06	16,233	23,594	11,147
2006 - 07	18,460	25,423	11,675
2007 - 08	19,808	27,940	12,805
2008 - 09	21,666	30,734	14,162
2009 - 10	26,368	36,169	17,918
2010 - 11	28,006	36,951	18,708
2011 - 12	29,513	37,012	18,748
2012 - 13	29,812	38,667	19,230
2013 - 14	30,233	38,250	19,584
2014 - 15*	31,966*		

\* Projected

**South Texas College**  
**Current & Plant Funds**  
**Summary of Revenues and Transfers and Expenditures,**  
**Transfers and Reserves by Fund**

**Budget for Fiscal Year 2014 - 2015**

<b>Fund</b>	<b>Revenues and Transfers*</b>	<b>Expenditures, Transfers and Reserves</b>
Unrestricted Fund	\$ 151,285,133	\$ 151,285,133
Auxiliary Fund	\$ 1,999,026	\$ 1,999,026
Restricted Fund	\$ 73,797,316	\$ 73,797,316
Plant Fund - Unexpended - Construction	\$ 44,101,542	\$ 44,101,542
Plant Fund - Renewals & Replacements	\$ 4,607,595	\$ 4,607,595
Plant Fund - Retirement of Indebtedness	\$ 14,972,234	\$ 14,972,234

\* Amounts may include Fund Balance (Carryover).

# **Unrestricted Fund Revenues**

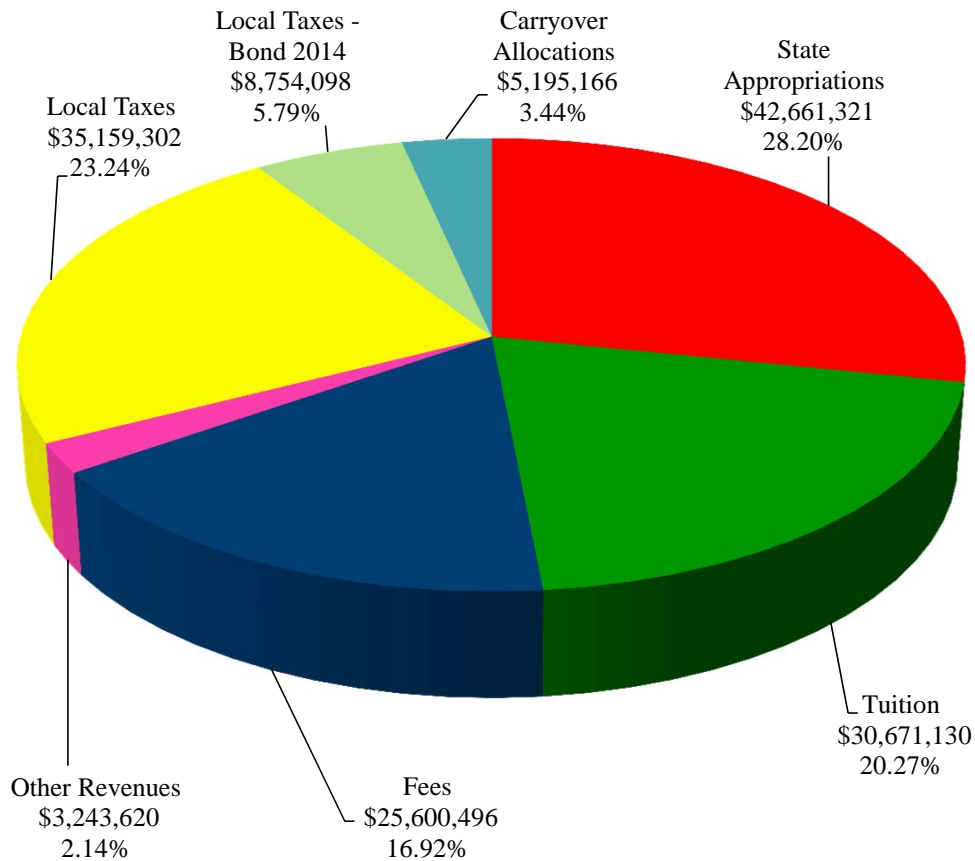


This page intentionally left blank.

# South Texas College Unrestricted Fund Revenues by Source

**Budget for Fiscal Year 2014 - 2015**

Source of Revenues	FY '15 Budget	Percentage
State Appropriations	\$ 42,661,321	28.20%
Tuition	30,671,130	20.27%
Fees	25,600,496	16.92%
Other Revenues	3,243,620	2.14%
Local Taxes	35,159,302	23.24%
Local Taxes - Bond 2014	8,754,098	5.79%
Carryover Allocations	5,195,166	3.44%
<b>Total Revenues</b>	<b>\$ 151,285,133</b>	<b>100.00%</b>

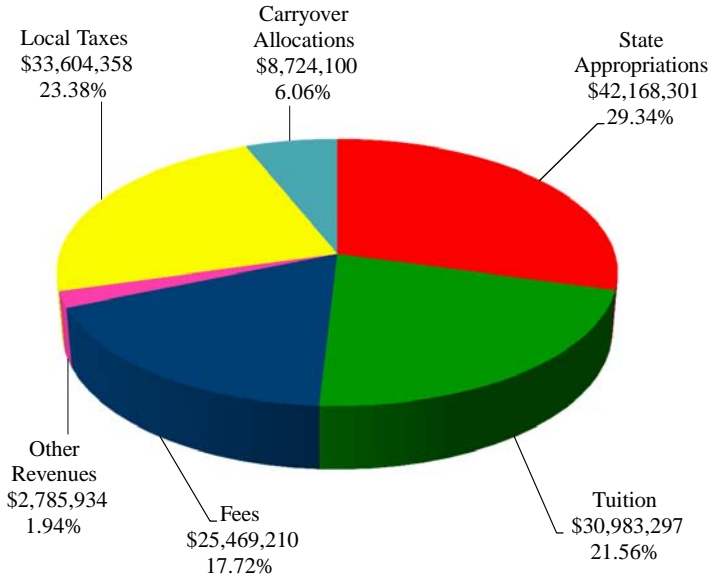




# South Texas College Unrestricted Fund Revenues by Source

## Comparison of Previous Fiscal Year with Fiscal Year Ending August 31, 2015

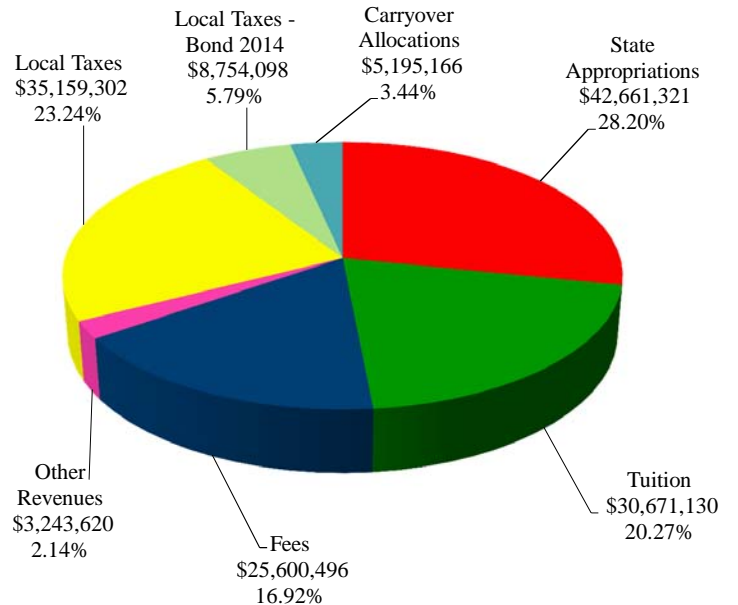
### Fiscal Year 2014



Source of Revenues	FY '14 Budget (As Amended)	Percentage
State Appropriations	\$ 42,168,301	29.34%
Tuition	30,983,297	21.56%
Fees	25,469,210	17.72%
Other Revenues	2,785,934	1.94%
Local Taxes	33,604,358	23.38%
Carryover Allocations	8,724,100	6.06%
<b>Total Revenues</b>	<b>\$ 143,735,200</b>	<b>100.00%</b>

### Fiscal Year 2015

Source of Revenues	FY '15 Budget	Percentage
State Appropriations	\$ 42,661,321	28.20%
Tuition	30,671,130	20.27%
Fees	25,600,496	16.92%
Other Revenues	3,243,620	2.14%
Local Taxes	35,159,302	23.24%
Local Taxes - Bond 2014	8,754,098	5.79%
Carryover Allocations	5,195,166	3.44%
<b>Total Revenues</b>	<b>\$ 151,285,133</b>	<b>100.00%</b>



**South Texas College**  
**Unrestricted Fund**  
**Summary of Revenues - Budget and Actual**

**Comparison of Previous Fiscal Years with Fiscal Year Ending August 31, 2015**

<b>Revenue Source</b>	<b>FY '13 Budget (As Amended)</b>	<b>FY '13 Actual</b>	<b>FY '14 Budget (As Amended)</b>	<b>FY '14 Estimated*</b>	<b>FY '15 Budget</b>
State Appropriations	\$ 38,977,830	\$ 38,977,829	\$ 42,168,301	\$ 42,168,301	\$ 42,661,321
Tuition	32,366,209	30,799,598	30,983,297	29,773,868	30,671,130
Fees	24,982,373	25,119,458	25,469,210	25,497,782	25,600,496
Other Revenues	2,863,346	3,107,131	2,785,934	2,729,329	3,243,620
Local Taxes	32,560,137	32,403,362	33,604,358	33,604,358	35,159,302
Local Taxes - Bond 2014	-	-	-	-	8,754,098
Carryover Allocations	8,112,460	8,112,460	8,724,100	8,724,100	5,195,166
<b>Total Unrestricted Fund Revenues</b>	<b>\$ 139,862,355</b>	<b>\$ 138,519,838</b>	<b>\$ 143,735,200</b>	<b>\$ 142,497,738</b>	<b>\$ 151,285,133</b>

\* Amounts are estimated. Actual amounts will be available after fiscal year end and completion of audit.

The Unrestricted Fund includes those economic resources of the college which are expendable for the purpose of performing the primary missions of the institution-instruction, research, and public service - and which are not restricted by external sources or designated by the governing board of other than operating expenditures.

Note:  
State Appropriations Revenues include state on-behalf benefits which are budgeted in the Unrestricted Fund and are subsequently transferred to the Restricted Fund along with related expenditures for Annual Financial Report purposes.

# **Unrestricted Fund Expenditures**

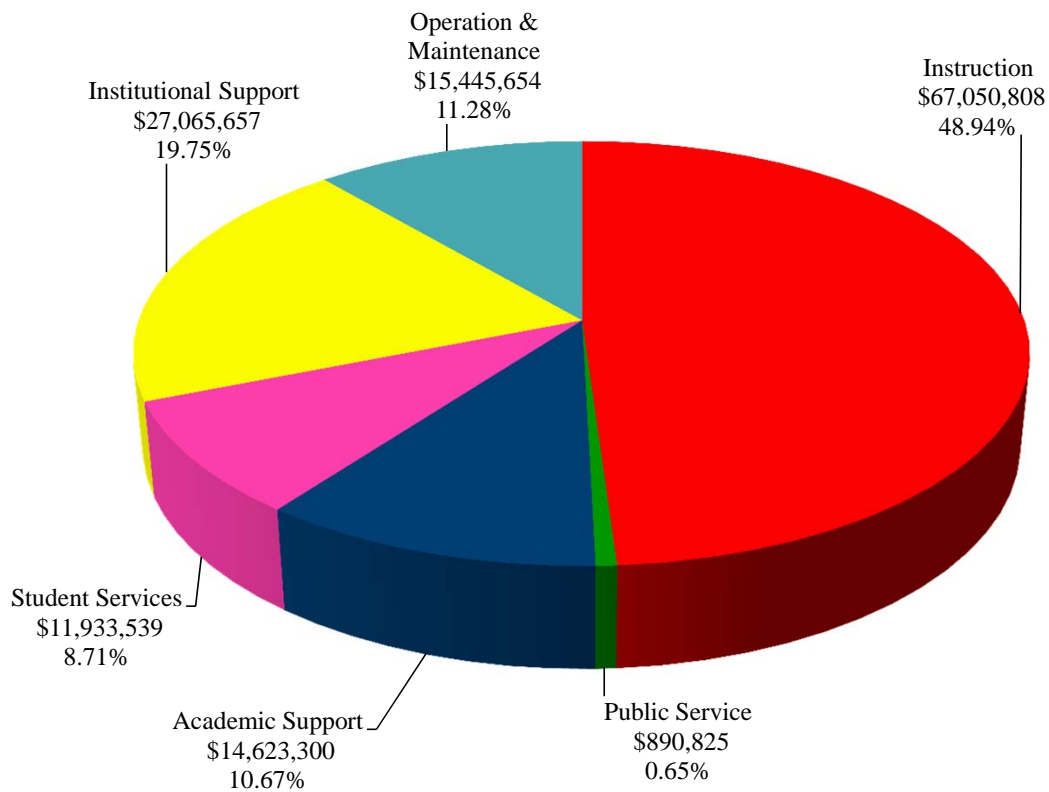


This page intentionally left blank.

# South Texas College Unrestricted Fund Expenditures by Function (Without Transfers and Reserves)

**Budget for Fiscal Year 2014 - 2015**

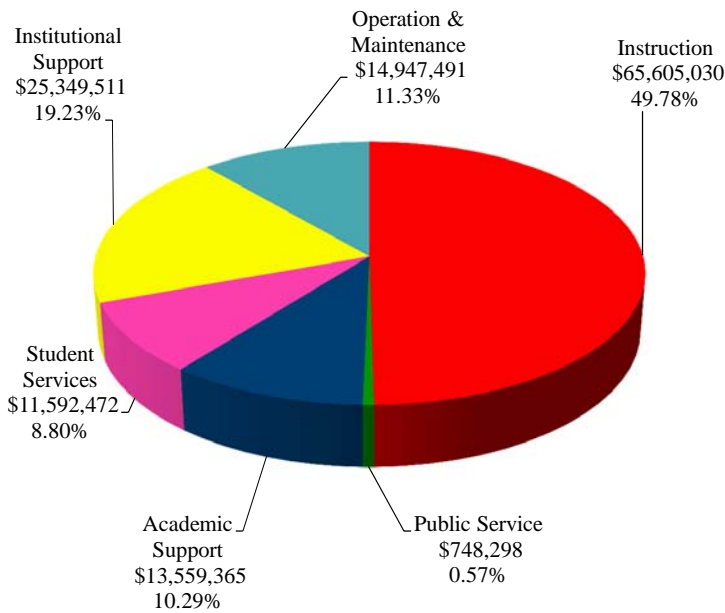
Function	FY '15 Budget	Percentage
Instruction	\$ 67,050,808	48.94%
Public Service	890,825	0.65%
Academic Support	14,623,300	10.67%
Student Services	11,933,539	8.71%
Institutional Support	27,065,657	19.75%
Operation & Maintenance	15,445,654	11.28%
<b>Total Expenditures</b>	<b>\$ 137,009,783</b>	<b>100.00%</b>



# South Texas College Unrestricted Fund Expenditures by Function (Without Transfers and Reserves)

## Comparison of Previous Fiscal Year with Fiscal Year Ending August 31, 2015

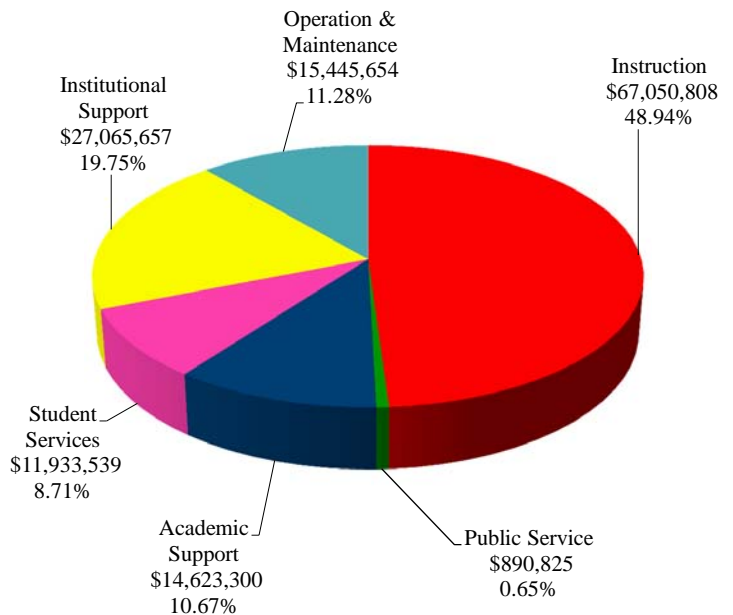
### Fiscal Year 2014



Function	FY '14 Budget (As Amended)	Percentage
Instruction	\$ 65,605,030	49.78%
Public Service	748,298	0.57%
Academic Support	13,559,365	10.29%
Student Services	11,592,472	8.80%
Institutional Support	25,349,511	19.23%
Operation & Maintenance	14,947,491	11.33%
<b>Total Expenditures</b>	<b>\$ 131,802,167</b>	<b>100.00%</b>

### Fiscal Year 2015

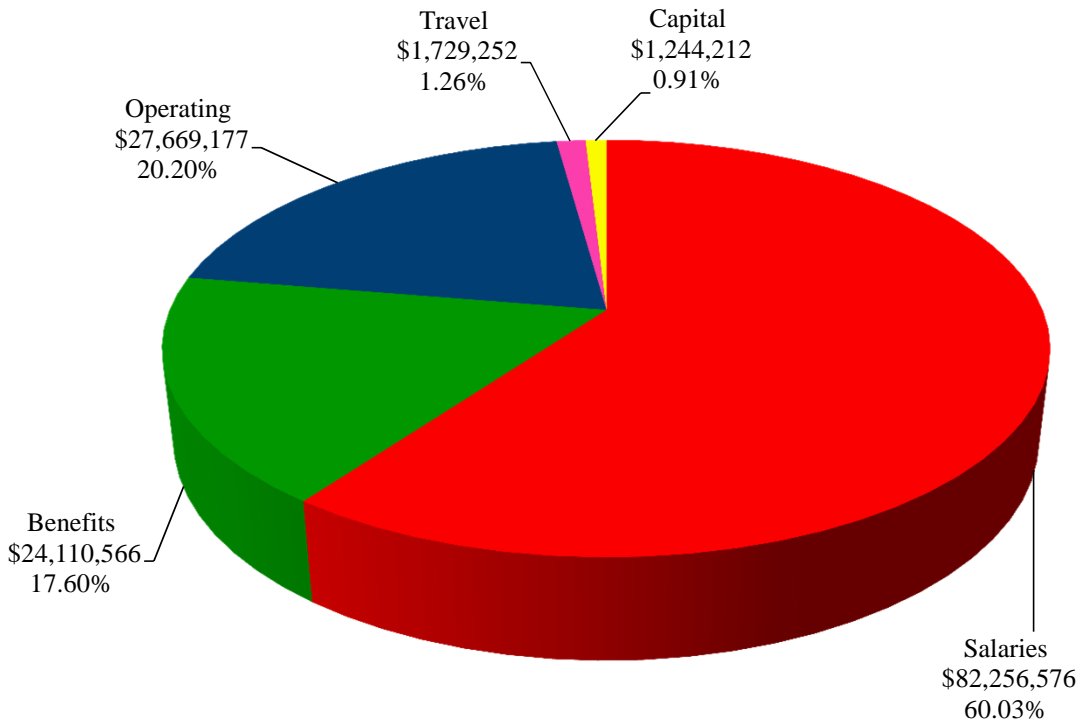
Function	FY '15 Budget	Percentage
Instruction	\$ 67,050,808	48.94%
Public Service	890,825	0.65%
Academic Support	14,623,300	10.67%
Student Services	11,933,539	8.71%
Institutional Support	27,065,657	19.75%
Operation & Maintenance	15,445,654	11.28%
<b>Total Expenditures</b>	<b>\$ 137,009,783</b>	<b>100.00%</b>



**South Texas College  
Unrestricted Fund  
Expenditures by Classification  
(Without Transfers and Reserves)**

**Budget for Fiscal Year 2014 - 2015**

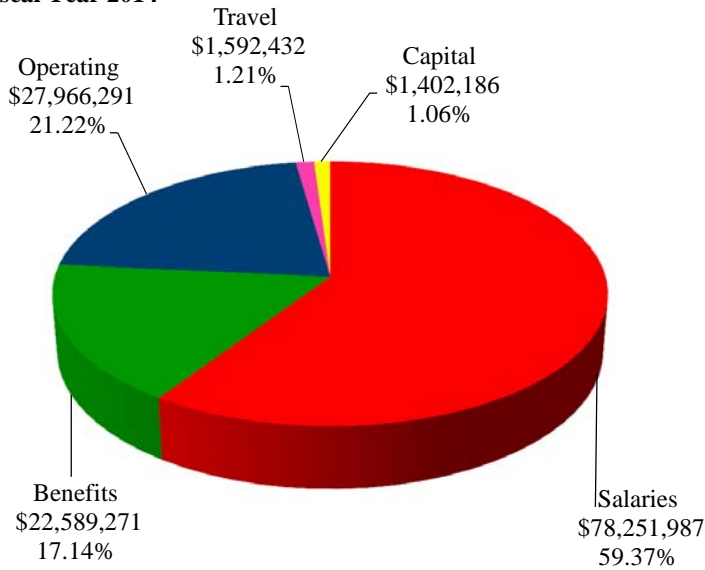
Classification	FY '15 Budget	Percentage
Salaries	\$ 82,256,576	60.03%
Benefits	24,110,566	17.60%
Operating	27,669,177	20.20%
Travel	1,729,252	1.26%
Capital	1,244,212	0.91%
<b>Total Expenditures</b>	<b>\$ 137,009,783</b>	<b>100.00%</b>



# South Texas College Unrestricted Fund Expenditures by Classification (Without Transfers and Reserves)

## Comparison of Previous Fiscal Year with Fiscal Year Ending August 31, 2015

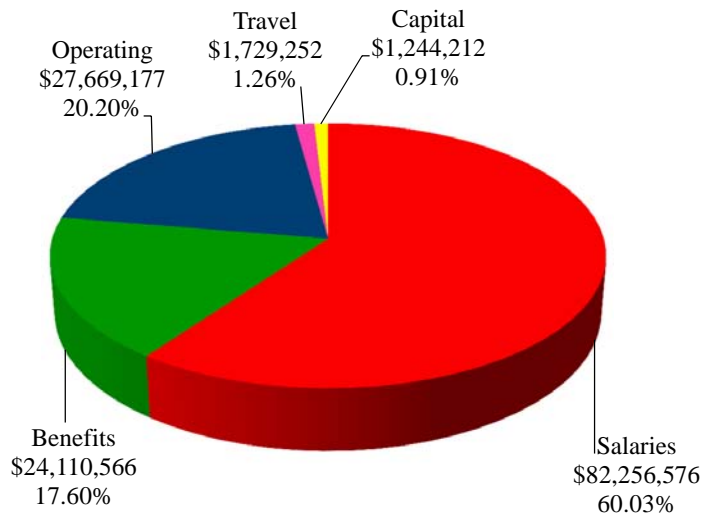
### Fiscal Year 2014



Classification	FY '14 Budget (As Amended)	Percentage
Salaries	\$ 78,251,987	59.37%
Benefits	22,589,271	17.14%
Operating	27,966,291	21.22%
Travel	1,592,432	1.21%
Capital	1,402,186	1.06%
<b>Total Expenditures</b>	<b>\$ 131,802,167</b>	<b>100.00%</b>

### Fiscal Year 2015

Classification	FY '15 Budget	Percentage
Salaries	\$ 82,256,576	60.03%
Benefits	24,110,566	17.60%
Operating	27,669,177	20.20%
Travel	1,729,252	1.26%
Capital	1,244,212	0.91%
<b>Total Expenditures</b>	<b>\$ 137,009,783</b>	<b>100.00%</b>





**South Texas College**  
**Unrestricted Fund**  
**Summary of Expenditures by Function and Classification**  
**Budget for Fiscal Year 2014 - 2015**

<b>Function / Classification</b>	<b>Salaries</b>	<b>Percent of Total</b>	<b>Benefits</b>	<b>Percent of Total</b>	<b>Operating</b>	<b>Percent of Total</b>
Instruction	\$ 46,812,190	56.91%	\$ 13,781,680	57.16%	\$ 5,584,695	20.18%
Public Service	525,071	0.64%	77,398	0.32%	256,426	0.93%
Academic Support	8,738,784	10.62%	2,392,481	9.92%	2,831,569	10.23%
Student Services	7,924,857	9.63%	2,382,423	9.88%	1,425,246	5.15%
Institutional Support	12,296,316	14.95%	3,745,764	15.54%	9,909,090	35.81%
Operation & Maintenance - Plant	5,959,358	7.25%	1,730,820	7.18%	7,662,151	27.70%
<b>Total - Without Transfers &amp; Reserves</b>	<b>82,256,576</b>	<b>100.00%</b>	<b>24,110,566</b>	<b>100.00%</b>	<b>27,669,177</b>	<b>100.00%</b>
<b>Percent of Total Expenditures Without Transfers &amp; Reserves</b>	60.03%		17.60%		20.20%	
<b>Transfers and Reserves</b>						
Transfer-Construction Fund	-		-		2,500,000	
Transfer-MTR Bond Series 2007	-		-		395,400	
Transfer-NAAMREI/IAM	-		-		625,852	
Contingency	-		-		2,000,000	
LT, Bond Series 2014 Reserve	-		-		8,754,098	
<b>Total Transfers and Reserves</b>	<b>-</b>		<b>-</b>		<b>14,275,350</b>	
<b>Total Unrestricted Budget Expenditures/Transfers/Reserves</b>	<b>\$ 82,256,576</b>		<b>\$ 24,110,566</b>		<b>\$ 41,944,527</b>	
<b>Percent of Total Expenditures With Transfers &amp; Reserves</b>	54.37%		15.94%		27.73%	

**South Texas College**  
**Unrestricted Fund**  
**Summary of Expenditures by Function and Classification**

**Budget for Fiscal Year 2014 - 2015**

(Continued)

<b>Travel</b>	<b>Percent of Total</b>	<b>Capital</b>	<b>Percent of Total</b>	<b>Total</b>	<b>Percent of Total Budget W/O Trans/Reserv</b>	<b>Percent of Total Budget With Trans/Reserv</b>
\$ 806,943	46.66%	\$ 65,300	5.25%	\$ 67,050,808	48.94%	44.32%
31,930	1.85%	-	0.00%	890,825	0.65%	0.59%
304,554	17.61%	355,912	28.61%	14,623,300	10.67%	9.67%
201,013	11.62%	-	0.00%	11,933,539	8.71%	7.89%
321,487	18.59%	793,000	63.74%	27,065,657	19.75%	17.89%
63,325	3.67%	30,000	2.40%	15,445,654	11.28%	10.21%
<b>1,729,252</b>	<b>100.00%</b>	<b>1,244,212</b>	<b>100.00%</b>	<b>137,009,783</b>	<b>100.00%</b>	<b>90.57%</b>
1.26%		0.91%		100.00%		
-		-		2,500,000		
-		-		395,400		
-		-		625,852		
-		-		2,000,000		
-		-		8,754,098		
-		-		<b>14,275,350</b>		<b>9.43%</b>
<b>\$ 1,729,252</b>		<b>\$ 1,244,212</b>		<b>\$ 151,285,133</b>		<b>100.00%</b>
1.14%		0.82%		100.00%		



This page intentionally left blank.

# **Unrestricted Fund Capital Expenditures**

**South Texas College**  
**Unrestricted Fund**  
**Summary of Capital Expenditures by Function and Organization**

**Budget for Fiscal Year 2015**

<b>Organization Name</b>	<b>Organization Code</b>	<b>Total</b>
<b>Instruction</b>		
Distance Ed Instructional Tech	211002	\$ 56,000
Biology	221301	9,300
<b>Total Instruction</b>		<b>65,300</b>
<b>Academic Support</b>		
Library Acquisition	530002	197,000
BAT and Support Materials	530008	30,912
Inst Tech Maint & Replacement	540008	28,000
Office of Strategic Initiatives	560001	100,000
<b>Total Academic Support</b>		<b>355,912</b>
<b>Institutional Support</b>		
IT Risk and Security	510005	88,000
Application Development Services	510010	60,000
Information Security	512001	150,000
Telecom	520002	233,000
Infrastructure	520004	262,000
<b>Total Institutional Support</b>		<b>793,000</b>
<b>Operation &amp; Maintenance</b>		
Distribution Center	420003	30,000
<b>Total Operation &amp; Maintenance</b>		<b>30,000</b>
<b>Total Capital Expenditures</b>		<b>\$ 1,244,212</b>



This page intentionally left blank.

# **Auxiliary Fund**

**South Texas College**  
**Auxiliary Fund**  
**Summary of Revenues, Expenditures and Transfers - Budget and Actual**  
**Comparison of Previous Fiscal Years with Fiscal Year Ending August 31, 2015**

<b>Fiscal Year</b>	<b>Revenues* / Expenditures / Transfers</b>	<b>Budget</b>	<b>Actual**</b>
2012-2013	Revenues	\$ 2,126,501	\$ 1,812,407
	Expenditures and Transfers	\$ 2,126,501	\$ 1,383,521
2013-2014	Revenues	\$ 2,088,023	\$ 2,088,023
	Expenditures and Transfers	\$ 2,088,023	\$ 2,088,023
2014-2015	Revenues	\$ 1,999,026	
	Expenditures and Transfers	\$ 1,999,026	

\* Revenues may include Fund Balance (Carryover)

\*\* Projected for Fiscal Year 2014

The *Auxiliary Fund* accounts for transactions of self-supporting activities. The fund exists to provide goods or services to students, faculty, staff, other institutional departments, or incidentally to the general public. The assessed fee is directly related to, although not necessarily equal to, the cost of the goods or services. Examples include the College bookstore, food service, wellness center, child care center and general conferences.





This page intentionally left blank.

# **Restricted Fund**

**South Texas College**  
**Restricted Fund**  
**Summary of Revenues, Expenditures and Transfers - Budget and Actual**  
**Comparison of Previous Fiscal Years with Fiscal Year Ending August 31, 2015**

<b>Fiscal Year</b>	<b>Revenues / Expenditures/Transfers</b>	<b>Budget</b>	<b>Actual*</b>
2012-2013	Revenues and Transfers	\$ 79,115,684	\$ 69,979,134
	Expenditures and Transfers	\$ 79,115,684	\$ 69,511,119
2013-2014	Revenues and Transfers	\$ 75,659,845	\$ 75,659,845
	Expenditures and Transfers	\$ 75,659,845	\$ 75,659,845
2014-2015	Revenues and Transfers	\$ 73,797,316	
	Expenditures and Transfers	\$ 73,797,316	

\* Projected for Fiscal Year 2014

The *Restricted Fund* accounts for operating funds that have been restricted for a specific purpose by external parties, grants, contracts, donors, or legislation.



This page intentionally left blank.

# **Plant Fund**

**South Texas College**  
**Plant Funds**  
**Summary of Revenues, Expenditures and Transfers**

**Budget for Fiscal Year 2014 - 2015**

<b>Fund</b>	<b>Revenues and Transfers*</b>	<b>Expenditures and Transfers</b>
Plant Fund - Unexpended - Construction Fund	\$ 44,101,542	\$ 44,101,542
Plant Fund - Renewals & Replacements Fund	\$ 4,607,595	\$ 4,607,595
Plant Fund - Retirement of Indebtedness Fund	\$ 14,972,234	\$ 14,972,234

\*Amounts may include Fund Balance (Carryover).

The *Unexpended - Construction Fund* accounts for resources to be used for plant construction or acquisition.

The *Renewals and Replacements Fund* accounts for resources to be used for renewing and replacing facilities on existing College capital assets.

The *Retirement of Indebtedness Fund* accounts for funds held in reserve for paying principal and interest on debt, as well as related costs in accordance with bond indentures.



This page intentionally left blank.

# Resolution



**A RESOLUTION ADOPTING THE BUDGET OF  
SOUTH TEXAS COLLEGE FOR THE FISCAL YEAR  
BEGINNING SEPTEMBER 1, 2014 AND ENDING  
AUGUST 31, 2015 IN ACCORDANCE WITH THE  
PROVISIONS OF THE TEXAS EDUCATION CODE  
AND ORDERING OTHER PROVISIONS RELATED TO  
THE SUBJECT MATTER HEREOF.**

**BE IT ORDERED BY THE BOARD OF TRUSTEES OF SOUTH TEXAS  
COLLEGE, THAT:**

**SECTION I:** The Budget Estimate of revenues for South Texas College District (the "College District") and the expenses of conducting the affairs thereof for the ensuing fiscal year beginning September 1, 2014, and ending August 31, 2015, as submitted by the President of the College, be, and the same is in all things, adopted and approved as the budget of all of the current revenues and expenses for the fiscal year beginning the 1st day of September, 2014, and ending the 31st day of August, 2015.

**SECTION II:** The amount of ad valorem taxes and revenue from other sources, as estimated by the President, is hereby appropriated out of the various Funds for the payment of operating expenses and capital outlay of the College District. A copy of the Budget Summary indicating such revenues and appropriating their expenditures is attached hereto and made a part hereof for all purposes as Exhibit "A" and shall remain on file in the Office of the President.

**SECTION III:** The sums indicated in Exhibit "A" are hereby appropriated in the Unrestricted Fund and College's Debt Service Fund out of the current year ad valorem taxes as collected for the purposes of maintenance and operation of the College District, as applicable, and applying the interest due on the general obligation bonds, redeeming the bonds as they mature, and creating sinking funds as required by such bonds.

**SECTION IV:** All Resolutions or parts of Resolutions in conflict herewith are hereby repealed.

**SECTION V:** This Resolution shall be and remain in full force and effect as of September 1, 2014.

**SECTION VI:** If any part, or parts, of this Resolution are found to be invalid or unconstitutional by a court having competent jurisdiction, then such invalidity or unconstitutionality shall not affect the remaining parts hereof and such remaining parts shall remain in full force and effect, and to the extent this Resolution is considered severable.

**CONSIDERED, PASSED and APPROVED** this 26 day of August, 2014 at a meeting of the Board of Trustees of South Texas College District at which a quorum was present and which was held in accordance with the Texas Government Code Chapter 551.

SIGNED this 26 day of August, 2014.

**SOUTH TEXAS COLLEGE DISTRICT**

By:   
Roy de León, Chairman

ATTEST:

By:   
Paul R. Rodriguez, Secretary

